

Networking Font Directory

© Copyright, L.OOKsystems 1996.

All rights reserved. Neither the whole nor any part of the information contained in this document may be adapted or reproduced by any means electronic, mechanical or otherwise, except with proper written permission from the publisher, L.OOKsystems.

Installing the software

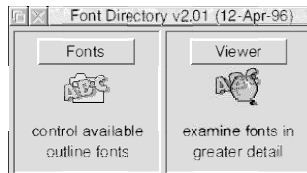
The network version of the software can be used to set-up both networked and stand-alone systems.

In either case, follow the instructions in the User Guide bearing in mind the fact that the FontFS Filer (mentioned on page 1.4) must be run from the 'Utils' directory on the master disc (see below).

Finding the applications

The control panel for the stand-alone version has five utilities available. These include three applications that help to maintain and update the fonts in the partition.

Only two applications
in the control panel



In the network version, these utilities are kept on the master disc in the 'Utils' directory. This offers added security as users will be unable to gain access to these facilities.

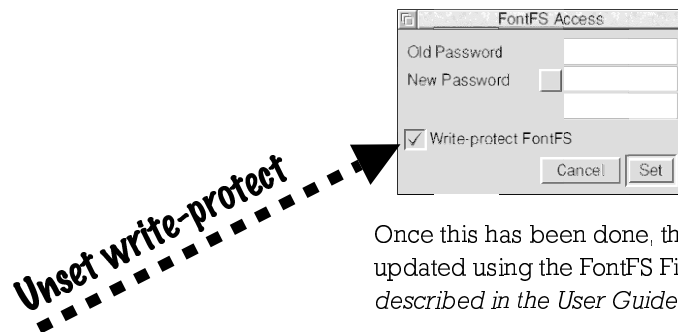
The rest are in the
'Utils' directory



Unlocking and updating FontFS

When the fonts are in normal use, a read-only version of FontFS is loaded in. This prevents tampering with the partition and allows multi-client access.

If you want to update the fonts in the font partition, you must first load the !UnlockFD application and unset the 'write protect' option.



Once this has been done, the partition can be updated using the FontFS Filer application (*as described in the User Guide*).

Please note: updating the partition will prevent multi-client access – make sure that the network fonts are not being used before you try this.

Using !LaunchFD

The network version also includes an extra utility called !LaunchFD. This is a skeleton application that can be used to launch the control panel.

It allows the real !FontFS application to be kept anywhere on the system – even hidden from the user.

For !LaunchFD to work, you must run the real !FontFS application first.

Customising Font Directory

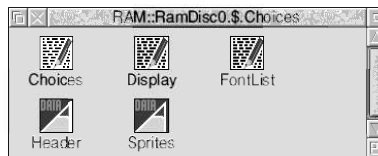
The network version of the software has been designed to be very flexible. This allows a large number of fonts to be accessed over a broad range of systems.

Each client can customise the way Font Directory behaves by creating a 'custom directory' which is pointed to by a system variable called `FontDir$Choices`.

For example, if a choices directory is stored on the local hard disc and called 'client:\$.choices', a line in the boot file setting `FontDir$Choices` would also be added thus:

```
Set FontDir$Choices client:$.choices
```

The `FontDir$Choices` directory can contain a number of items specific to the client:



1. The '**Choices**' file saved from Font Directory. This allows you to define which facilities are available for a particular client.
2. A default '**Fontlist**' and/or '**Display**' files. For example, you could set up display to hide fonts that are not to be accessed by the client.
3. A local **WYSIWYG display**. By copying the 'Header' and 'Sprites' files from the 'FontFS.Data' directory, you can cache the WYSIWYG display on the local hard disc. This will speed up the display and reduce loading on the network.

If any of the files above are not included in the local choices directory, defaults will be loaded from the network instead.

Automatic document scanning

By default, document scanning can be activated by holding down the Alt key when double-clicking on a document. However, it is possible to define a list of file types that will be automatically scanned when they are run (without holding the Alt key down).

This is done by:

1. Adding an 'S' to the 'Choices' file in the '!FontFS.FontFS' directory. It should read:

```
Set FontFS$Opts FKMRS
```

2. Adding the file type of the document into the 'RunTypes' text file kept inside the 'DocScan' directory. For example:

```
AFF:Acorn Draw File  
BC5:Impression Publisher File  
D87:Impression II Document  
D94:Artworks File
```

Using star commands

FontFS provides a number of star commands. The most useful are probably *FontFS_MergeList and *FontFS_UseFont. These two commands can be used to define which fonts are currently active.

***FontFS_MergeList** points to a file which contains fonts that are to be activated. This file can be created using the 'Save > Fontlist' option from the Font Directory application.

***FontFS_UseFont** can be used to switch on an individual font.

For more details use the ***Help** command.