

Local Preferences and Font Directory Professional (network version)

© Copyright, LOOKsystems September 1997.

All rights reserved. Neither the whole nor any part of the information contained in this document may be adapted or reproduced by any means electronic, mechanical or otherwise, except with proper written permission from the publisher, LOOKsystems.

Customising Font Directory

As with previous versions of the software, Font Directory Professional has been designed to be as flexible as possible. Each client can customise the way the software behaves which means a wide range of clients (from 1Mb A3000's to high-end RISC PC's) can be supported with just a single font partition.

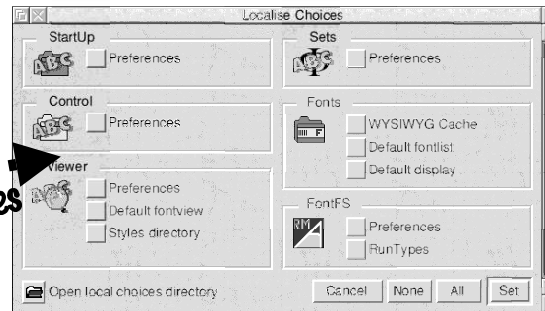


Setting-up Local Preferences

Setting-up local preferences has been made much easier and no longer needs the network manager to create customer directories or to define system variables, etc.

1. Copy the *!LocalFD* application from the 'Utils' directory on the master disc to the local hard disc (or client's workspace).
2. Double-click on the new copy of *!LocalFD*.
3. Run the *!Localise* application from the 'Utils' directory on the master disc and choose which preferences you wish to localise.

Use !Localise to set
each client's preferences



4. Use the Choices Editor (*!FDOpts*) to edit the local preferences as usual.

5. Ensure that the client's !Boot file runs the local copy of *!LocalFD* before *!FontFS*. For example:

```
Run adfs::4.$ .Resources. !LocalFD
Run net:$ .Resources. !FontFS
```

Need some help?

If you have any queries regarding the installation or use of Font Directory Professional, we are always happy to help and can be contacted at:

LOOKsystems
15 Grovehill Drive
Falmouth
Cornwall
TR11 3HS

Tel/fax: 01326 318279
International: +44 1326 318279
Email: enquires@looksystems.demon.co.uk