



Font Directory Professional

© Copyright, LOOKsystems Oct 2003.

All rights reserved. Neither the whole nor any part of the information contained in this document may be adapted or reproduced by any means electronic, mechanical or otherwise, except with proper written permission from the publisher, LOOKsystems.

Upgrading from v2.xx

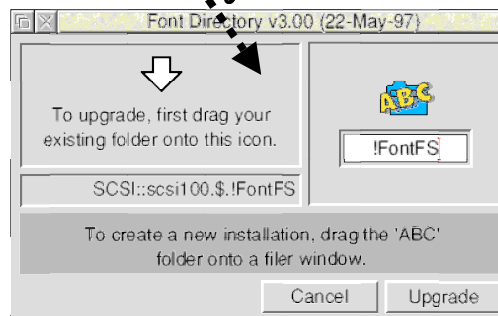
Upgrading from Font Directory 2 should be nice and easy:

1. Run the !Install application.
2. Type in your name.
3. Drag your existing !FontFS folder from the hard drive onto the installation window.
4. Click on the **upgrade** button.
5. Refer to the accompanying documentation disc for advice on the new facilities.

1. Run !Install



3. Drag FontFS



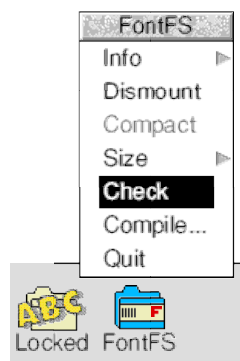
4. Click on UPGRADE

Checking your fonts

Once you have upgraded to Font Directory Professional, **we recommend that you use the filer application to check that the font stored in the partition are valid.**

If warnings are reported, refer to the 'filer.warnings' text file on the documentation disc for advice.

Check that your fonts are valid



Reorganising your fonts

Since Font Directory Professional supports font sets, **we recommend that you store your fonts in directories that represent the source/supplier** e.g. 'Artworks1', 'Monotype', 'PD', etc.

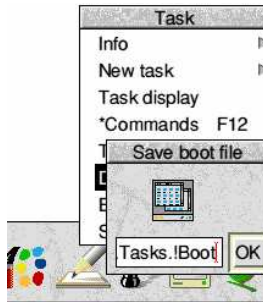
The sets editor can then be used to group the fonts into any further categories e.g. 'A-Z', 'Serif', 'Fancy', 'Favourite fonts', etc.

Changing your boot file...

If you already run Font Directory 2 on start up, you will need to change your boot file. This can be done in one of two ways:

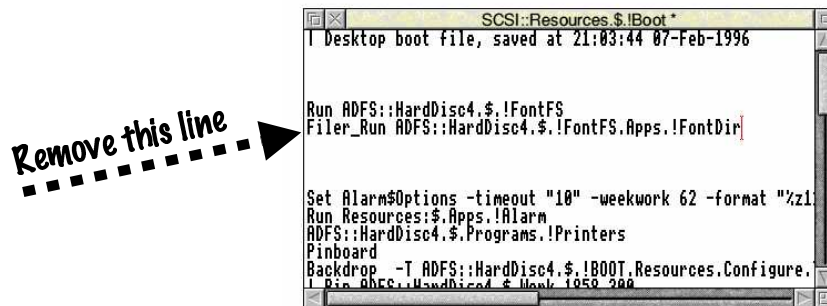
A. Saving a new desktop boot file

Having upgraded to FD Pro, restart your computer, cancelling the error 'Can't find ...!FontDir'. When the computer has finished booting up, save the desktop boot file – this can be done from the task manager menu on the iconbar.



B. Modifying your boot file

Remove the line running the !FontDir application:



The Choices Editor

The choices editor is a new application designed to maintain the user preferences of the entire Font Directory suite.

Most of these preferences are straight forward and/or described in the reference section of the printed FD2 manual – hence they are not explain here.

However, you should note that having modified the boot file to only run the !FontFS folder, you can **use the choices editor to set which applications are run on start up** e.g. running the control application will put the 'ABC' icon on the iconbar.

