



Font Directory Professional

"How can you possibly improve on Font Directory 2?", I hear you say. By adding even more amazing facilities that give you better control over your fonts, of course! You can now print them out, sort them into different categories, rename them and even control other applications – to mention just a few of the improvements. The features that are listed below give you an idea of the extent of the changes. There are all sorts of minor updates along with a new choices editor and better networking support that we just don't have room to mention. However, I'm sure that you can see from the things that we have listed that this is a significant improvement over FD2.

Remote Control Fonts

This facility allows you to use Font Directory to control other applications. All you have to do is select some text and drag the font you want to use from the WYSIWYG display onto the application's window. The font will be activated and a message sent to force the application to change the text.



This saves a lot of time as it is usually more intuitive than the application's own cumbersome menus or dialogue boxes. It is even quicker if the application already has the 'input focus', as there is no need to drag the font. Just click on the WYSIWYG display with <ctrl><shift> held down.

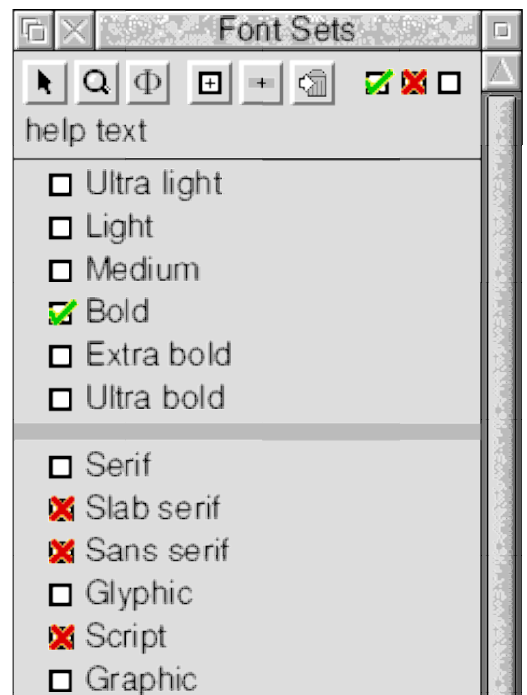
Currently, this facility works with the Chars, Draw, Artworks and the whole Impression family. We are also working on support for Ovation and TextEase. Please contact us if there is any other application you would like supported.

Font Sets Editor

The font sets editor is a completely new tool, which like the font viewer, is designed to help you get the most out of your font collection. The basic idea is that each font can join any number of user defined sets e.g. 'fancy', 'bold', 'script', 'serif', 'sans serif', etc. Once this is done, the sets editor can be used to control the WYSIWYG display by forcing it to show (or activate) the fonts in a chosen set e.g. just the 'fancy' fonts.

- activate sets
- display sets
- join/resign sets
- create set
- create group
- delete item

The real power of this tool comes from the fact that it can apply these sets in combination. For example, you can ask the sets editor to display only the fonts in your collection which are both 'fancy' and 'bold' but not 'script'.

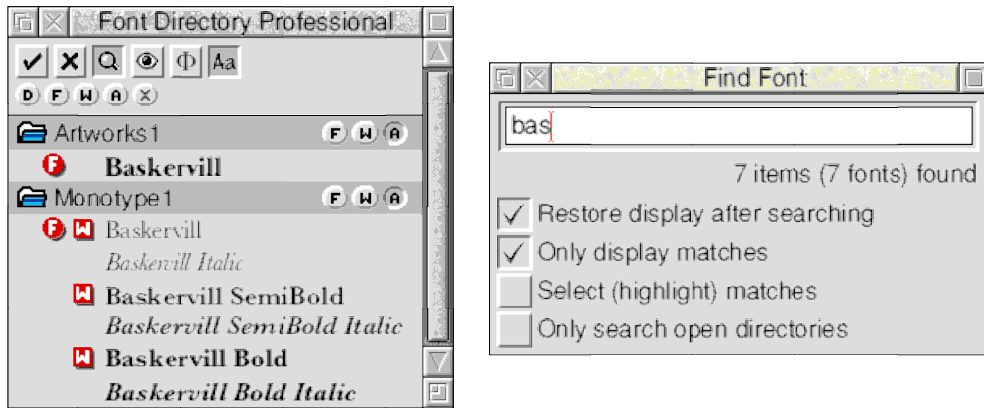


Another way of using the sets editor is to define the fonts needed for different jobs or by different users e.g. 'Newsletter fonts', 'Client X', 'Job ABC', 'Jo's fonts', etc. These can then be quickly and easily viewed or activated as required.

Of course, we only have room to give a couple of examples of how the sets editor can be used. It is a powerful tool which can sort through an entire font collection to display only the fonts you are interested in – the only real limit to the number of categories and ways in which you can apply them is your imagination.

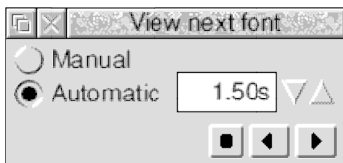
Exclusive searching

As a result of the improvements made to support the font sets editor, the search-as-you-type facility now has the option of displaying only the found fonts. This makes it much easier to see matches that span several directories.



Font Player

The font player is a 'labour saving device' which is used to control the font viewer. It allows you to view one font after another without having to keep clicking on the WYSIWYG display.

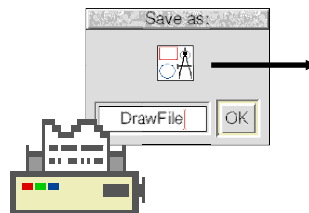


The font player really comes into its own when used in conjunction with the sets editor. For example, having found all of the bold fancy fonts in your collection, you can use the font player to display each font in the particular text and style you had in mind. You can then sit back and watch for a font that fits the bill.

Quick Print

At last, we have added a print out option to the font viewer! It will print out exactly what is in a font view window along with a banner giving the font name, point size, leading, etc for later reference. Where possible, it will orientate the page to fit the text i.e. landscape or portrait.

On top of the quick print facility, there is also an 'export to draw' option which means you can embed character maps, and the likes, in other documents.



Character map pointers

When the pointer is over a font view character map, it will change to display the ASCII character number. This is a small improvement but it helps determine the <alt><keypad> number for top-bit-set characters and symbol fonts.



(For those of you who don't know what <alt><keypad> numbers are: each character in a font is assigned a number e.g. the @ symbol is usually 64. Holding the <alt> key down and typing the character number on the keypad will insert that character into a document.)

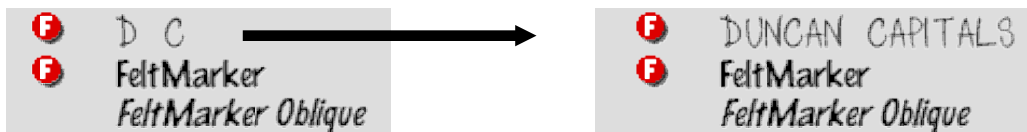
Ultra-fast document scanning extensions

The time taken to scan a document can be considerably improved if Font Directory knows exactly where to find the font names. This is especially true of documents that embed large graphics such as scanned images or complicated drawfiles. Whilst it is impractical to write scanners for every RISC OS filetype, Font Directory now provides dedicated extensions for most of the popular DTP applications:

Artworks	Impression Style/Publisher/Publisher Plus
Draw/Poster/Vector	Ovation Pro
Impression II/Junior	TextEase

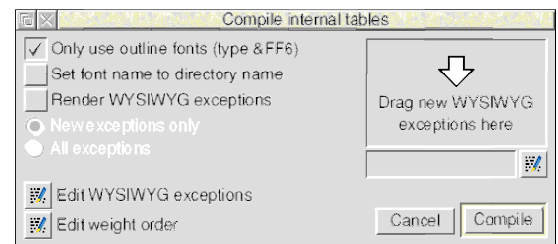
Custom WYSIWYG display

The WYSIWYG display is a great tool but it relies on being able to display the whole font name. This works for the majority of fonts but there are some exceptions such as symbol fonts or all capital fonts. For example, the font 'Duncan Capitals' would only appear in the WYSIWYG display as 'D C'. Font Directory Professional solves this problem by allowing you to choose exactly what text is used to render the display.



Font renaming

Some of you may already know that it is possible to 'rename' a font by changing the directory names. The new font will appear correctly in font menus and on the screen. However, the font manager will be unable to cache the data properly as the name inside the files will be different from the 'directory name'. This makes the font very slow to display.



Of course, Font Directory Professional comes to the rescue. It automatically checks fonts to ensure that the names inside the font files are the same as 'directory names'. If it finds a difference, it can update the font files to the new name which means that your fonts will cache properly again.

Font checking

Font Directory Professional can perform a number of checks on the files put into the partition. This helps to ensure that all of the fonts are valid and that there are no duplicates.



These checks include: filetype of IntMetrics/Outlines/x90y45/b90y45/t90y45/Encodings/PoScript/AFM files; number of IntMetrics/Outlines files; font name in IntMetrics file matches directory name; Outlines file starts with "FONT" marker; and multiple instances of a font (duplicates).

Exporting fonts

You can now export fonts quickly and easily from the WYSIWYG display – so you don't have to run the filer application and hunt around the partition. This is great when sending documents to be typeset.

