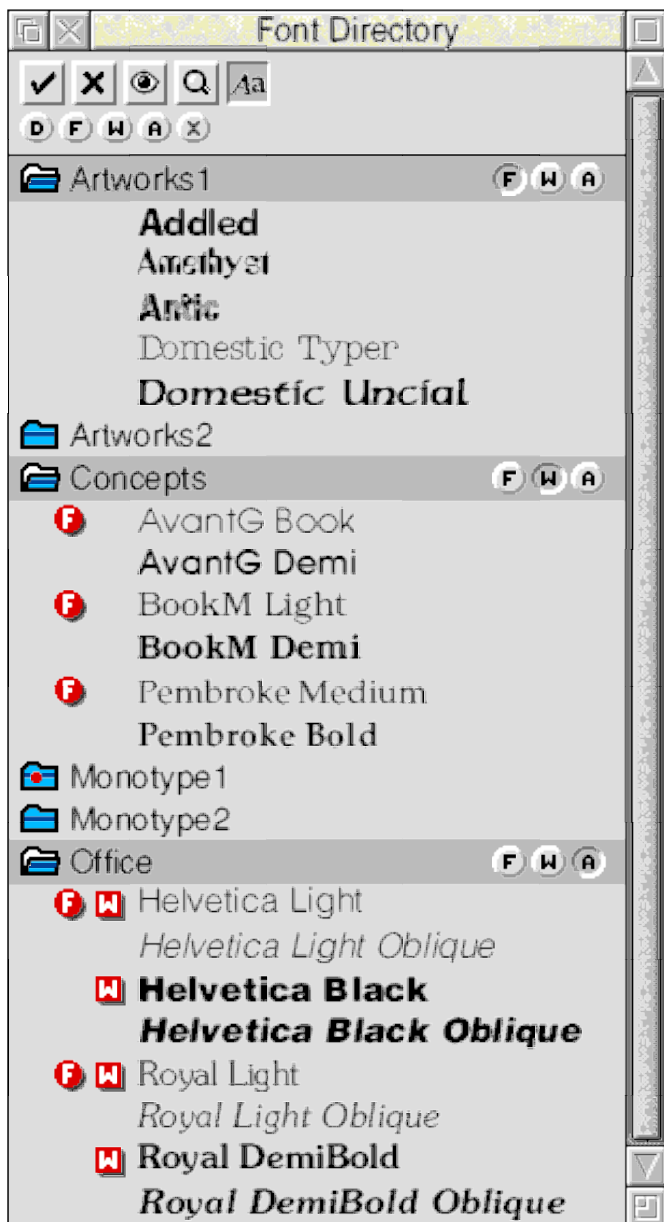




Hi-tech font management...



Font Directory 2

The new version of font directory is the culmination of a year's intensive development. It represents not only a quiet revolution in productivity but a major step in innovation offering a level of control and flexibility that is unprecedented on any desktop computer. Many new facilities have been added and much of the original application has been rewritten in machine code which is faster and more compact.

The delivery system

Now, the number of fonts that can be used at any one time is practically unlimited. Fonts can be delivered to the desktop almost instantaneously and, at last, applications can be notified that things have changed without issuing a cumbersome screen redraw. These technical advances offer greater flexibility and deliver a significant increase in productivity by keeping delays to an absolute minimum.

The user interface

Adding and removing individual fonts from the active font list is much quicker. Just double-click on a font, weight or family and it will become instantly available. Alternatively, a range of fonts can be properly drag-selected and the 'tick' and 'cross' icons used as before. There are also lots of short key cuts and a neat little button bar which offers easy access to all of the popular features of font directory.

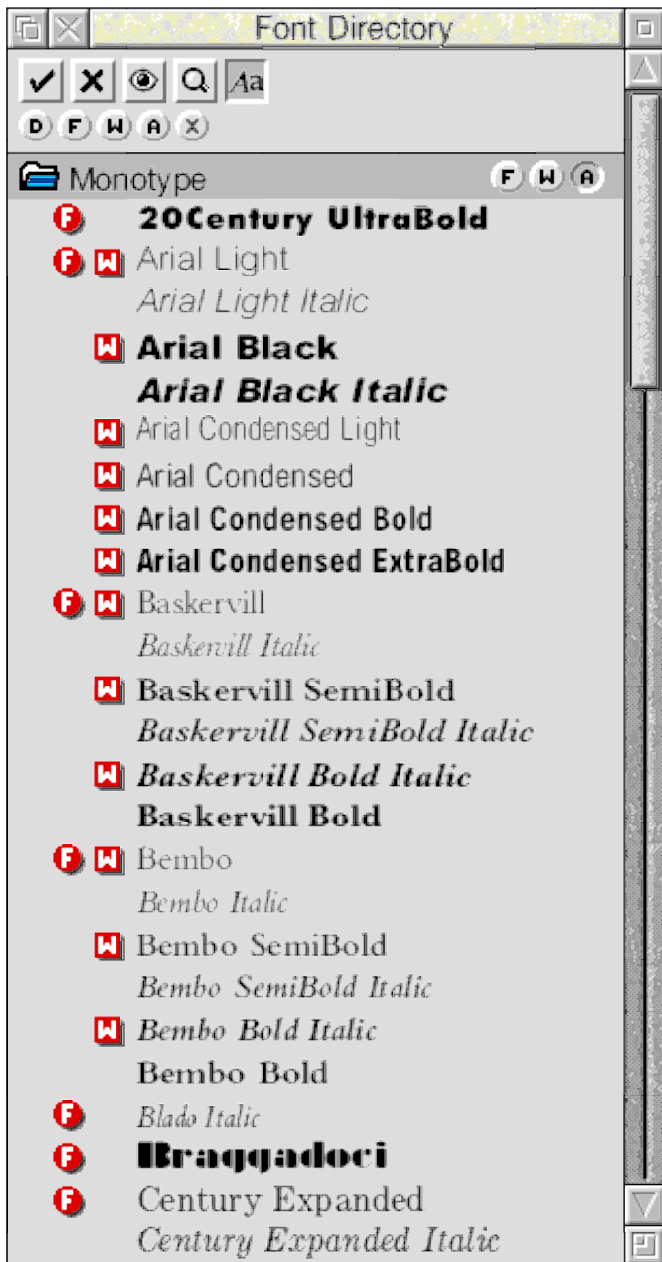
- make fonts available
- remove fonts
- search for a font
- examine fonts in detail
- use the WYSIWYG display
- control which fonts are visible

A 'collapsible' font list

Whilst the original font directory solved the problem of unwieldy font menus in other applications, it still presented a long font list itself. With a large number of fonts, this could be difficult to navigate, especially if a font was at the bottom of the list.

The new font directory resolves this predicament by providing an ingenious 'collapsible' display. Directories can be open or closed allowing a font to be located quickly without having to scroll through all of the preceding directories. The overall length of the font list can be further reduced by forcing directories to display only font family names or weights.

The screenshot shown above demonstrates closed directories (Artworks2, Monotype1 & 2) as well as open directories displaying font families (Artworks1), weights (Concepts) or all fonts (Office).



A WYSIWYG display

Special attention has been paid to the design and implementation of a comprehensive WYSIWYG display and consequently, **this is a truly remarkable feature.** The display is compressed, cached directly from the hard disc and rendered in real-time. This allows an entire list of fonts, including all family members, to be displayed at a massive 32pt while still using very little memory.

The result is an invaluable visual guide that makes choosing the right font completely effortless.

When displaying 100 Monotype Typefaces (Pack One) on a RISC PC, the new font directory requires the following application space: no display, 84k; all 29 font families, 108k; all 100 fonts (48 visible) 124k – that's less than the 128k required by original font directory and is quite extraordinary given that the raw display data alone represents just over 100k.

Search-as-you-type

Another notable feature introduced with the new font directory is the ability to search for fonts. Just type the font name and it will be rapidly brought to the top of the list and highlighted ready for use. Again, this makes finding the right font extremely quick-and-easy.



Automatic document scanning

The document scanning facilities are now entirely independent. This means that documents can be scanned without having to drag the file to the font directory icon – and even without having the font directory application loaded at all. Just double-click on the file with the **alt key** held down and the document will be scanned and loaded in one pass.

A font viewer application

Font directory 2 is also supplied with a new application dedicated to viewing fonts in detail. This is an innovative development that delivers **interactive** font viewing to the desktop for the first time and promotes greater experimentation with the fonts from both the fontfs partition and traditional font folders.

...that's easy-to-use